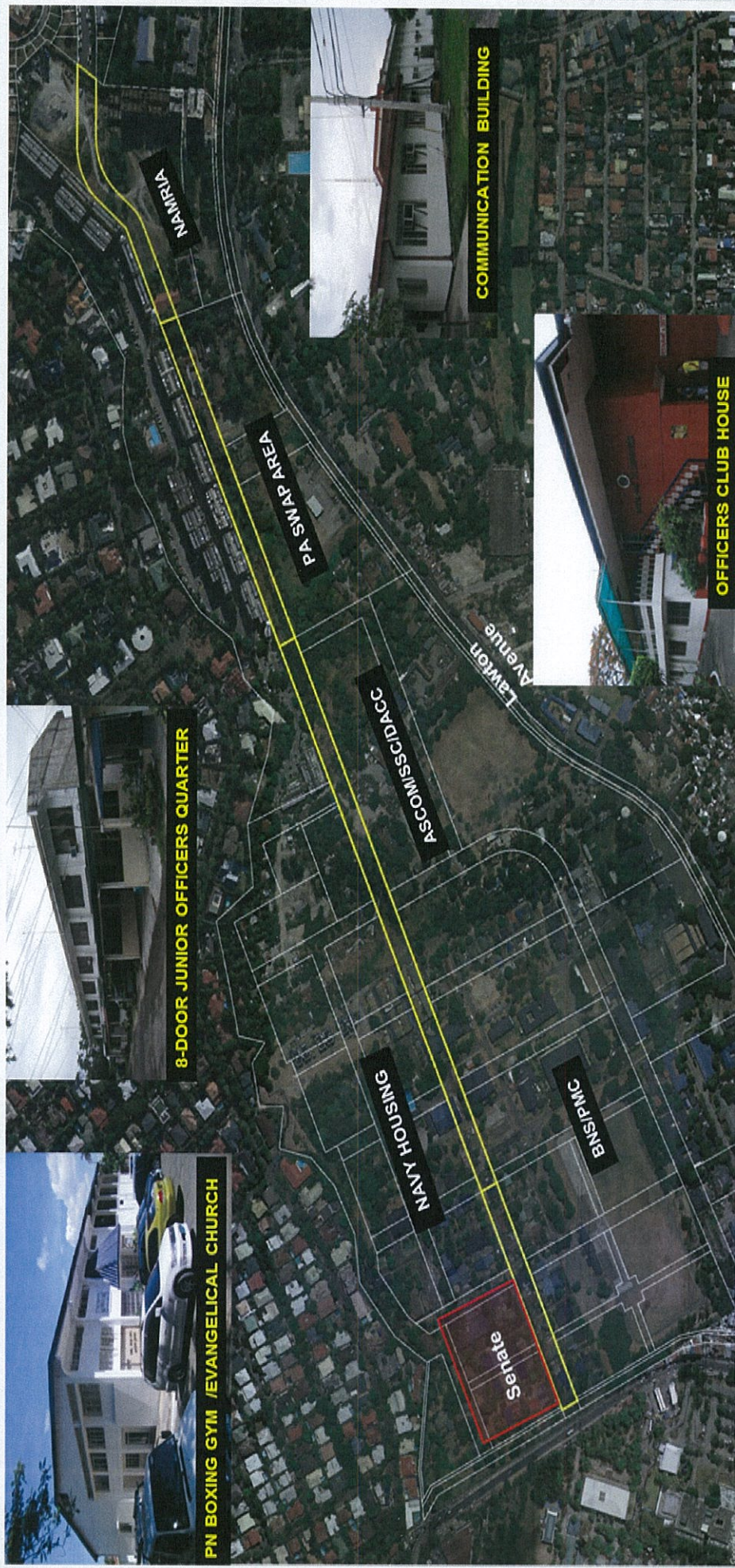


LOCATION MAP

ANNEX "A"

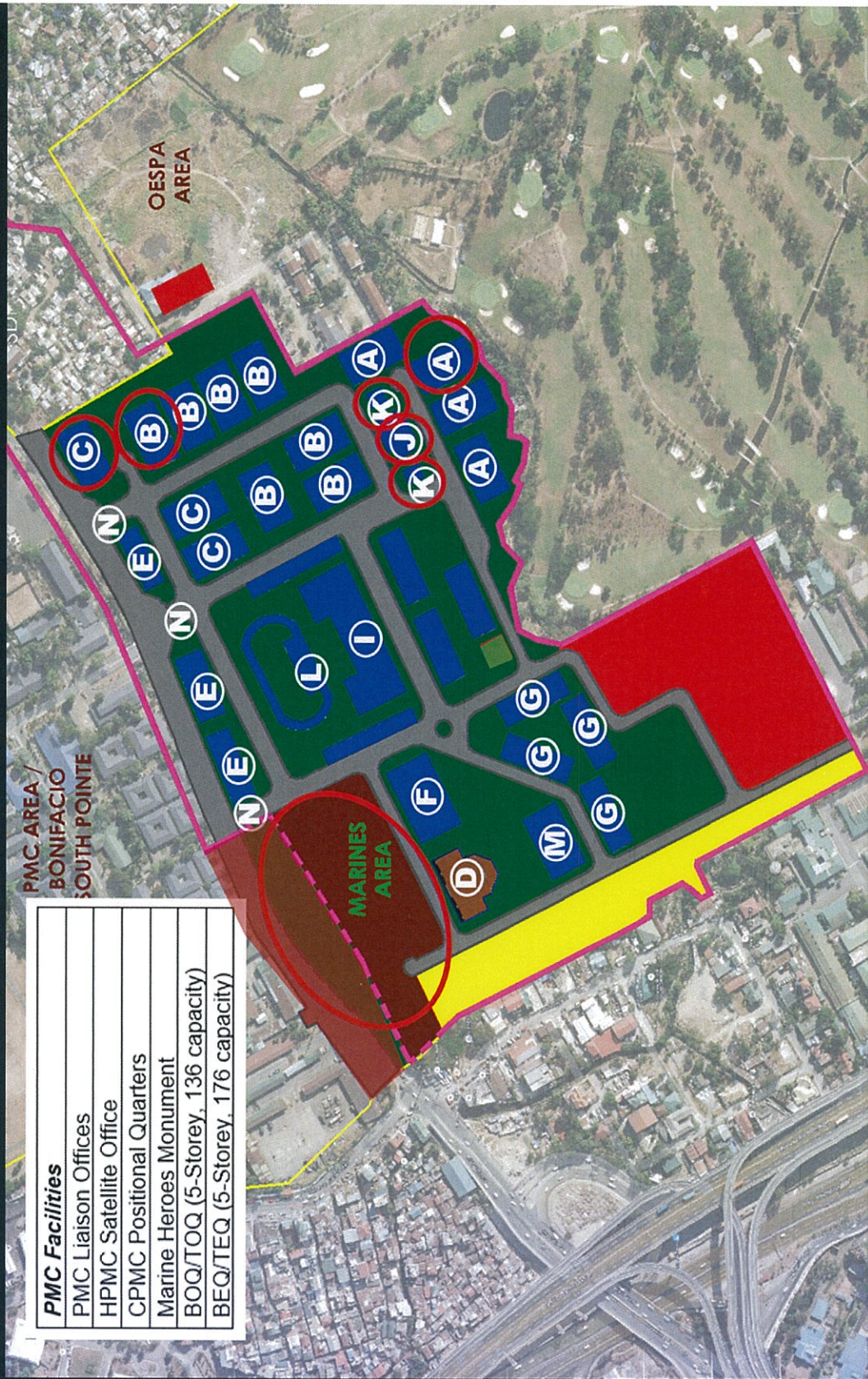


Handwritten signatures and initials.

BNS LOT 1

- A - SOQ BUILDING
- B - MOQ BUILDING
- C - BASE ADMIN, BOQ & TOQ
- D - CHURCH, MULTI-FAITH & MORTUARY
- E - COMMERCIAL FACILITIES
- F - MEDICAL FACILITIES
- G - MEQ
- H - BEQ & TEQ
- I - OFFICE BUILDING
- J - FOIC'S OFFICIAL RES.
- K - POSITIONAL QUARTERS
- L - RECREATIONAL AREA
- M - GYM
- N - GATE

ANNEX "B1"



Handwritten signature

FORT SAN FELIPE - CAVITE

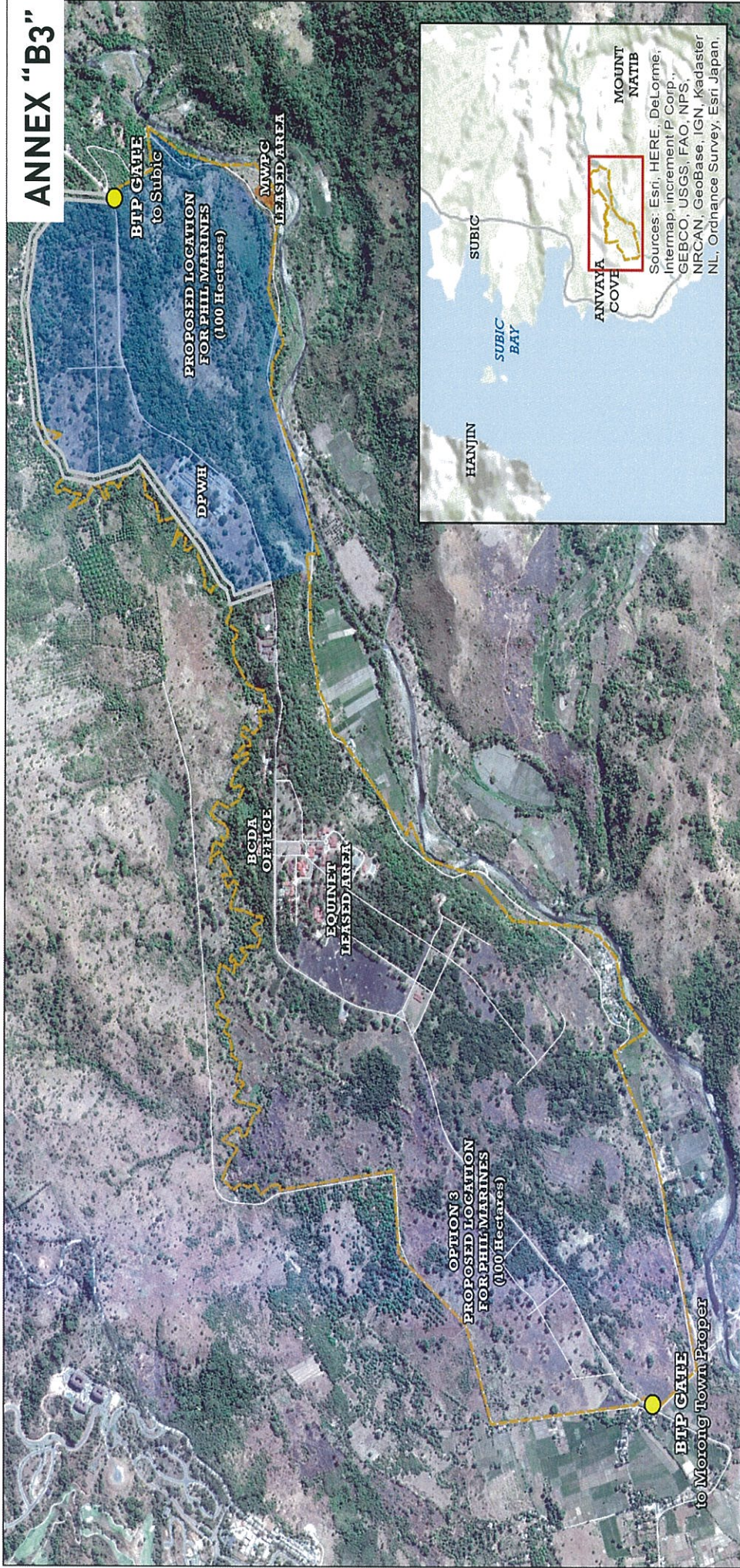
ANNEX "B2"



<p>FORWARDED BY: T.A.M. Engineering Co. <small>10000 Alibon Road, Alibon, Cavite</small></p>	<p>DESIGNED BY: GENY F. AGUIRRE <small>10000 Alibon Road, Alibon, Cavite</small></p>	<p>CLIENT: USMC</p>	<p>DATE: 2015</p>	<p>APPROVED BY: GENY F. AGUIRRE <small>10000 Alibon Road, Alibon, Cavite</small></p>	<p>DATE: 27 November 2015</p>	<p>PROJECT AND LOCATION: NAVY SUPPORT FACILITY PORT SAN FELIPE, CAVITE CITY</p>	<p>SHEET COMMENTS: SEE DEVELOPMENT PLAN</p>
<p>CHECKED BY: GENY F. AGUIRRE <small>10000 Alibon Road, Alibon, Cavite</small></p>	<p>RECOMMENDED BY: GENY F. AGUIRRE <small>10000 Alibon Road, Alibon, Cavite</small></p>	<p>APPROVED BY: GENY F. AGUIRRE <small>10000 Alibon Road, Alibon, Cavite</small></p>	<p>DATE: 27 November 2015</p>	<p>PROJECT AND LOCATION: NAVY SUPPORT FACILITY PORT SAN FELIPE, CAVITE CITY</p>	<p>SHEET COMMENTS: SEE DEVELOPMENT PLAN</p>		

Handwritten signatures and initials.

ANNEX "B3"



0 1,000 meters

Notes:
 Areas indicated are indicative only. Actual areas will be based on the verified and approved survey plan.
 Satellite images based from Google Earth Imagery

PROPOSED LOCATION FOR PHILIPPINE MARINES BATAAN TECHNOLOGY PARK, MORONG, BATAAN

cartography by: DFGARCIA/YNDEFRANCIA approved by: RMCEPE

filename: BTP-Proposed Phil Marines Location Map Option 3.mxd



Sources: Esri, HERE, DeLorme, Intermap, increment P Corp., GEBCO, USGS, FAO, NPS, NRCAN, GeoBase, IGN, Kadaster NL, Ordnance Survey, Esri Japan, ANVAYA COVE, MOUNT NATIB